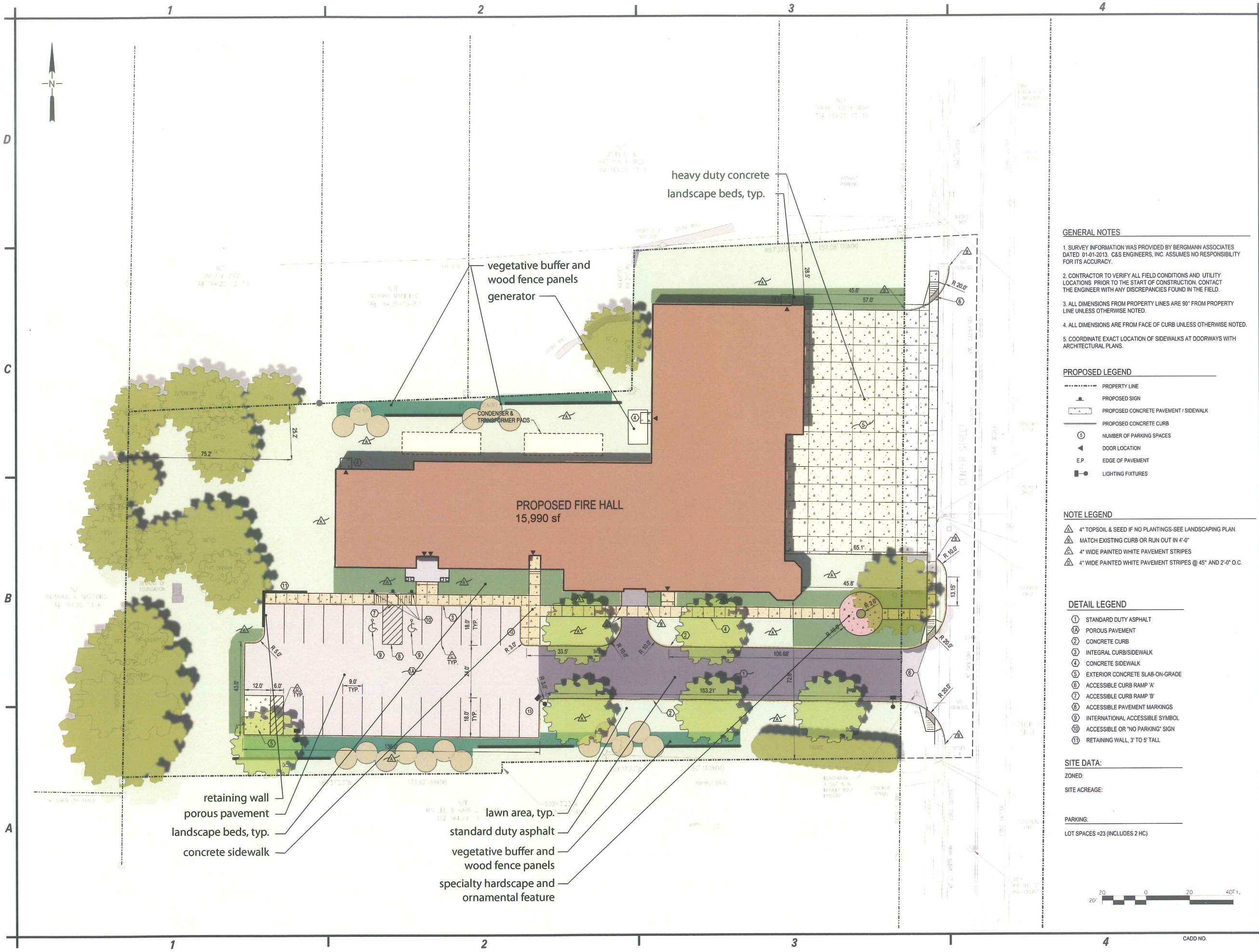
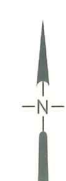


EAST AURORA FIRE HALL
CENTER STREET
EAST AURORA, NY

MARK	DATE	DESCRIPTION
REVISIONS		
PROJECT NO: M50.001.001		
DATE:		
SCALE: AS NOTED		
DRAWN BY:		
DESIGNED BY:		
CHECKED BY:		
NO ALTERATION PERMITTED HEREON EXCEPT AS PROVIDED UNDER SECTION 7209 SUBDIVISION 2 OF THE NEW YORK EDUCATION LAW		

CIVIL
SITE PLAN
C101



GENERAL NOTES

1. SURVEY INFORMATION WAS PROVIDED BY BERGMANN ASSOCIATES DATED 01-01-2013. C&S ENGINEERS, INC. ASSUMES NO RESPONSIBILITY FOR ITS ACCURACY.
2. CONTRACTOR TO VERIFY ALL FIELD CONDITIONS AND UTILITY LOCATIONS PRIOR TO THE START OF CONSTRUCTION. CONTACT THE ENGINEER WITH ANY DISCREPANCIES FOUND IN THE FIELD.
3. ALL DIMENSIONS FROM PROPERTY LINES ARE 90° FROM PROPERTY LINE UNLESS OTHERWISE NOTED.
4. ALL DIMENSIONS ARE FROM FACE OF CURB UNLESS OTHERWISE NOTED.
5. COORDINATE EXACT LOCATION OF SIDEWALKS AT DOORWAYS WITH ARCHITECTURAL PLANS.

PROPOSED LEGEND

- PROPERTY LINE
- PROPOSED SIGN
- ▭ PROPOSED CONCRETE PAVEMENT / SIDEWALK
- PROPOSED CONCRETE CURB
- Ⓢ NUMBER OF PARKING SPACES
- ◀ DOOR LOCATION
- E.P. EDGE OF PAVEMENT
- LIGHTING FIXTURES

NOTE LEGEND

- ▲ 4" TOPSOIL & SEED IF NO PLANTINGS-SEE LANDSCAPING PLAN
- ▲ MATCH EXISTING CURB OR RUN OUT IN 4'-0"
- ▲ 4" WIDE PAINTED WHITE PAVEMENT STRIPES
- ▲ 4" WIDE PAINTED WHITE PAVEMENT STRIPES @ 45° AND 2'-0" O.C.

DETAIL LEGEND

- ① STANDARD DUTY ASPHALT
- ② POROUS PAVEMENT
- ③ CONCRETE CURB
- ④ INTEGRAL CURB/SIDEWALK
- ⑤ CONCRETE SIDEWALK
- ⑥ EXTERIOR CONCRETE SLAB-ON-GRADE
- ⑦ ACCESSIBLE CURB RAMP 'A'
- ⑧ ACCESSIBLE CURB RAMP 'B'
- ⑨ ACCESSIBLE PAVEMENT MARKINGS
- ⑩ INTERNATIONAL ACCESSIBLE SYMBOL
- ⑪ ACCESSIBLE OR "NO PARKING" SIGN
- ⑫ RETAINING WALL, 3' TO 5' TALL

SITE DATA:
ZONED:
SITE ACREAGE:

PARKING:
LOT SPACES =23 (INCLUDES 2 HC)



retaining wall
porous pavement
landscape beds, typ.
concrete sidewalk

lawn area, typ.
standard duty asphalt
vegetative buffer and wood fence panels
specialty hardscape and ornamental feature

USER: **
DATE: **
TIME: **